



## The Lansdowne

### Four bedroom detached

THE LANDSDOWNE is a stylish four bedroom detached home with a first floor covered balcony overlooking Stoneham Park's landscaped grounds. Two storey accommodation comprises to the ground floor; an open-plan kitchen/dining room with bi-fold doors, living room, utility/boot room, WC and integrated garage. To the first floor is a master bedroom with en-suite and covered balcony, a second double bedroom with en-suite, two further double bedrooms and a family bathroom. Outside space provides driveway parking for three cars and a good sized rear garden.

The Lansdowne is available on the following plots.  
See separate site plan for plot locations.

44 50



Computer generated image. Indicative only.

*The perfect blend of town & country living.*

# The Lansdowne

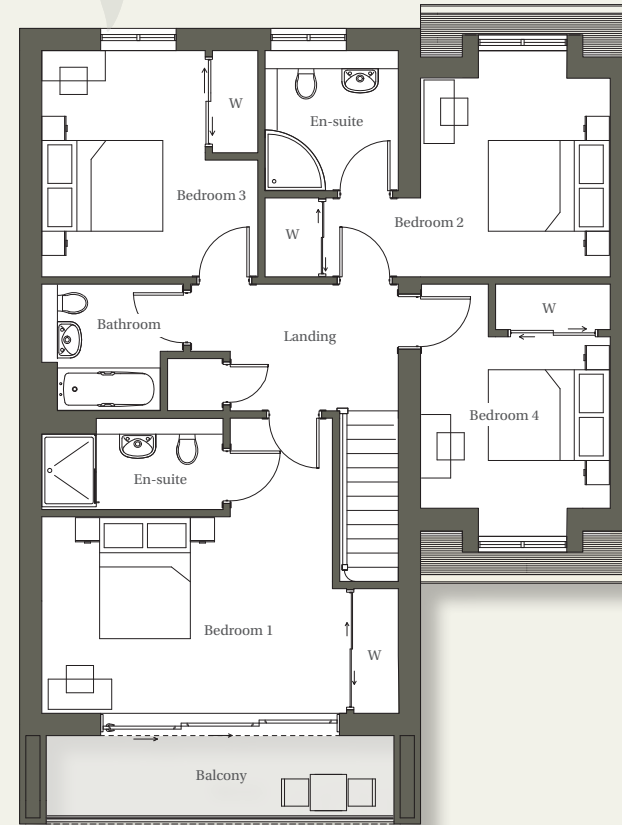
Total house area: 1,720ft<sup>2</sup>

Plans for plot 50 shown. Plot 44 is handed.



## Ground floor

Kitchen/Dining	5.92 x 5.39	19'5" x 17'8"
Living room	5.49 x 3.56	17'11" x 11'8"
Utility/Boot room	3.15 x 1.78	10'3" x 5'10"



## First floor

Bedroom 1	5.05 x 3.26	16'6" x 10'8"
Bedroom 2	3.76 x 3.58	12'3" x 11'9"
Bedroom 3	4.68 x 3.28	15'4" x 10'9"
Bedroom 4	3.13 x 2.38	10'3" x 7'9"

Dimensions shown are for guidance only and may vary during construction. Furniture layout is for illustrative purposes only. External materials and finishes may differ from those shown. Customers are advised to check their individual specifications prior to making a reservation. Details correct at the time of going to press February 2020.