



T H E M A R T E N S



Plot 1

— VALERY COTTAGE —

Delightful three bedroom, semi-detached stone cottage.

Downstairs benefits from a lounge with feature bay window and spacious kitchen/dining/family room with bi-folding doors that lead into the garden. Upstairs the master bedroom has an en-suite and built-in wardrobes while the second and third bedrooms have access to a family bathroom.

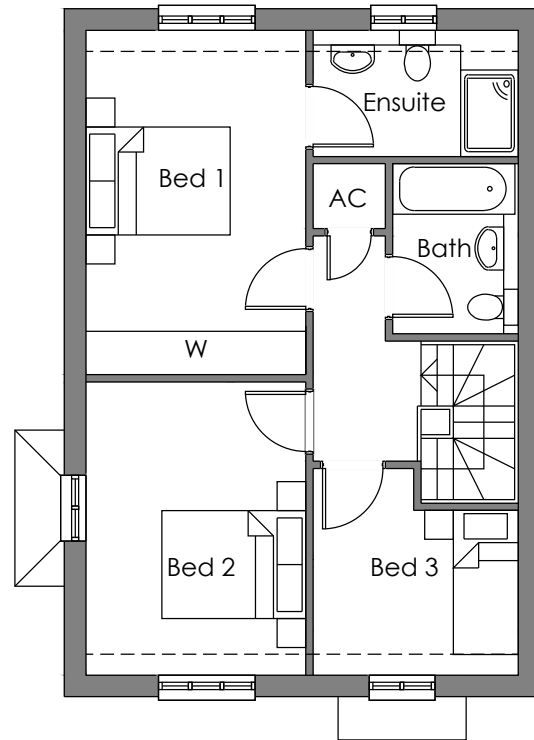
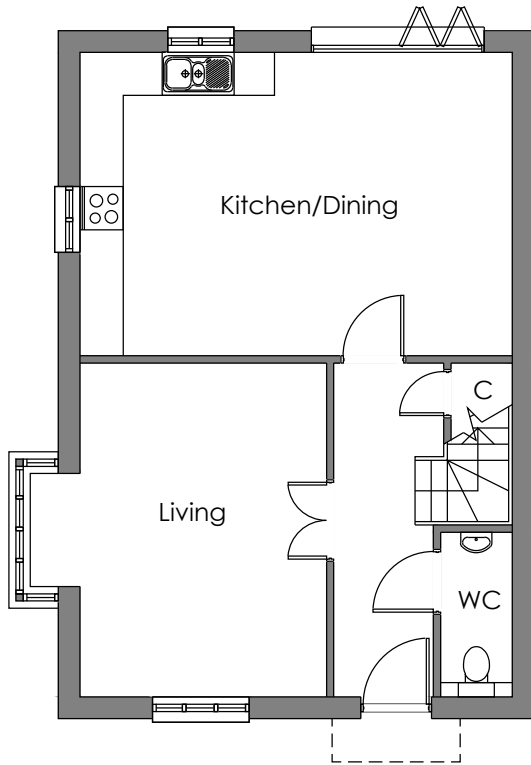
Generous parking for three cars, including two under a covered car port, plus additional spaces for visitors.



THE MARTENS

Plot 1

— VALERY COTTAGE —



GROUND FLOOR

Living room
3.4m x 4.6m (excluding bay)
11ft 1 in x 15ft 1 in

Kitchen / family / dining
5.9m x 4.1m
19ft 4 in x 13ft 5 in

FIRST FLOOR

Bedroom 1
3.0m x 4.7m
9ft 10 in x 15ft 5 in

Bedroom 2
3.0m x 4.1m
9ft 10 in x 13ft 5 in

Bedroom 3
2.8m x 2.9m
9ft 2 in x 9ft 6 in

TOTAL HOUSE AREA
1150 sq ft



DARCLIFFE HOMES

Superior Homes Built For Life

0118 950 8366

www.darcliffehomes.com

Kingfisher House, 17 Albury Close, Loverock Road, Reading, Berkshire, RG30 1BD

All dimensions indicated are for guidance only and may vary by plus or minus 100mm. Furniture layout is for illustrative purposes only. External materials and finishes used may differ from those indicated within these particulars at the discretion of Darcliffe Homes. Customers are advised to check their individual specifications prior to making a reservation.